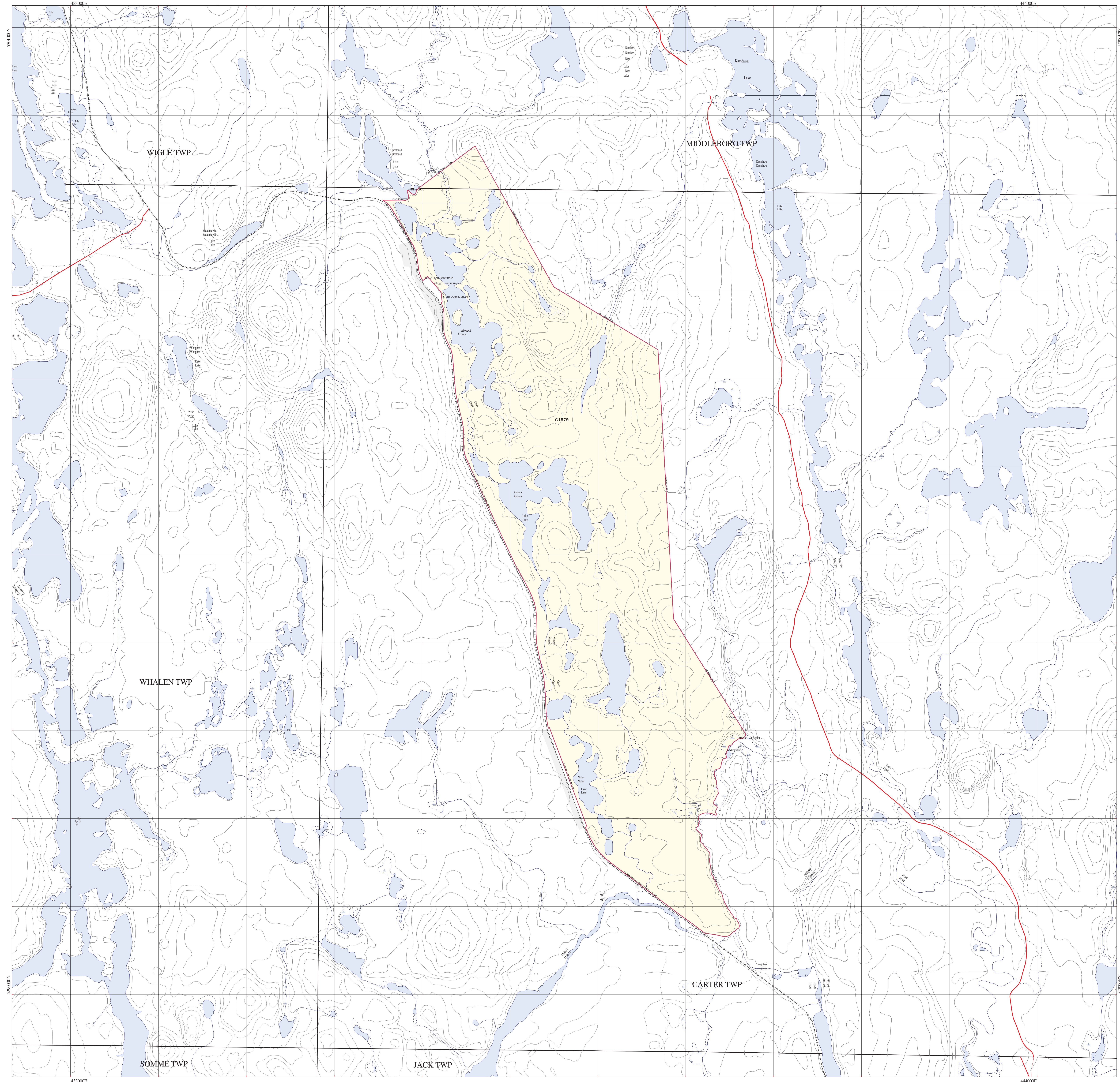


Ontario's Living Legacy C1579

AKONESI CHAIN OF LAKES COMPLEX
CONSERVATION RESERVE

MNR Proposed Boundary



- road
- accessway
- railway
- bridge
- transmission line
- trail-portage
- airstrip
- township boundary
- lot line - surveyed
- lot line - unsurveyed
- road allowance (not to scale)
- contour line
- river/stream
- river/stream - intermittent
- lake
- wetland
- patented land
- existing protected area
- forest reserve - mining claim or lease
- C1579 - Interim Protection Boundary

Site identifiers (e.g. P321) may be used to reference sites in the Ontario's Living Legacy Land Use Strategy document. Forest reserves whose identifier contains the same number as an adjacent provincial park or conservation reserve (e.g. F321) were created as directed in the Land Use Strategy when more complete information on mining tenure was gathered during the refinement of the site boundary. Areas indicated with the letters 'NS' are excluded from the site boundary.

This map is illustrative only. Do not rely on it as being a precise indicator of routes, locations of features, nor as a guide to navigation.

Only Ontario Crown land is included in this proposed conservation reserve. Where the boundary appears to overlap private land, Federal land, Indian Reserves, or existing Mining Act tenure, that portion of the site is not being regulated as a part of this conservation reserve. Consistent with the Ontario's Living Legacy Land Use Strategy however, should mining claims or leases within this area be retired in the future through normal processes, these claim or lease areas will be withdrawn and added to the conservation reserve.

Projection Parameters:

PROJECTION UTM
ZUNITS NO
UNITS METERS
DATUM NAD83
SPHEROID GRS1980
XSHIFT 0.000000000
YSHIFT 0.000000000
ZONE 17
PARAMETERS

Notes:

Published on February 18, 2002
For Internal Use Only

Data Source: TIMMINS and CHAPLEAU NRVIS Databases, 1999
Land Tenure: TIMMINS and NRVIS Database, 1999
Source Coverage: rmc1579w2

