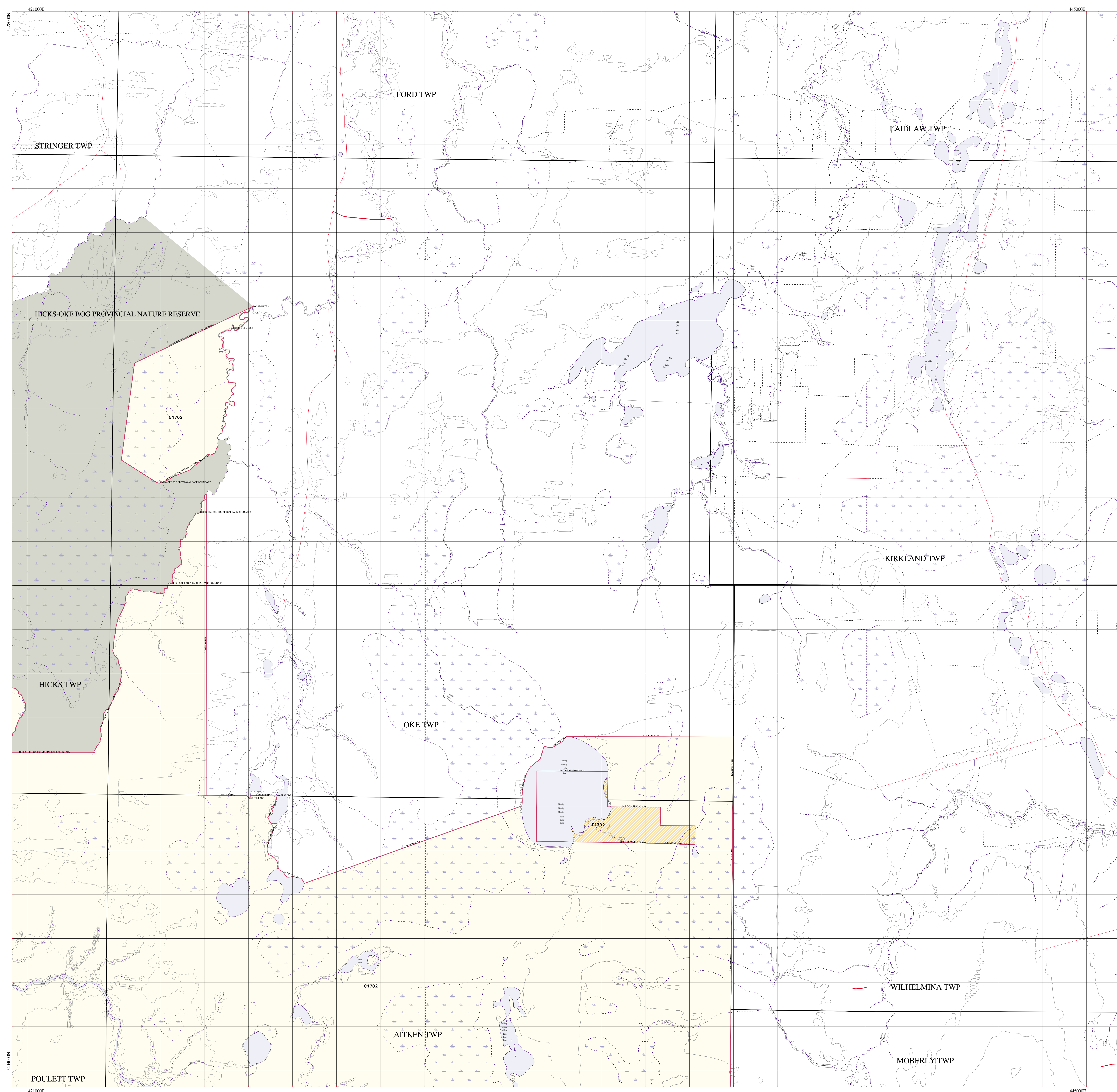


# Ontario's Living Legacy

## C1702 - Tile 2 of 4

NORTHERN CLAYBELT  
FOREST COMPLEX  
CONSERVATION RESERVE

### MNR Proposed Boundary



- road
- - - accessway
- - - - - railway
- bridge
- - - transmission line
- - - - - trail-portage
- airstrip
- township boundary
- - - lot line - surveyed
- - - - - lot line - unsurveyed
- road allowance (not to scale)
- contour line
- river/stream
- - - river/stream - intermittent
- lake
- wetland
- patented land
- existing protected area
- forest reserve - mining claim or lease
- C1702 - Interim Protection Boundary

Site identifiers (e.g. P321) may be used to reference sites in the Ontario's Living Legacy Land Use Strategy document. Forest reserves whose identifier contains the same number as an adjacent provincial park or conservation reserve (e.g. F321) were created as directed in the Land Use Strategy when more complete information on mining tenure was gathered during the refinement of the site boundary. Areas indicated with the letters 'NS' are excluded from the site boundary.

This map is illustrative only. Do not rely on it as being a precise indicator of routes, locations of features, nor as a guide to navigation.

Only Ontario Crown land is included in this proposed conservation reserve. Where the boundary appears to overlap private land, Federal land, Indian Reserves, or existing Mining Act tenure, that portion of the site is not being regulated as a part of this conservation reserve. Consistent with the Ontario's Living Legacy Land Use Strategy however, should mining claims or leases within this area be retired in the future through normal processes, these claim or lease areas will be withdrawn and added to the conservation reserve.

#### Projection Parameters:

PROJECTION UTM  
ZUNITS NO  
UNITS METERS  
DATUM NAD83  
SPHEROID GRS1980  
XSHIFT 0.000000000  
YSHIFT 0.000000000  
ZONE 17  
PARAMETERS

#### Notes:

Published on February 25, 2002  
For Internal Use Only

Data Source: HEARST, COCHRANE and TIMMINS NRVIS Databases, 1999  
Land Tenure: HEARST, COCHRANE and NRVIS Database, 1999  
Source Coverage: mrc1702tl2\_2

