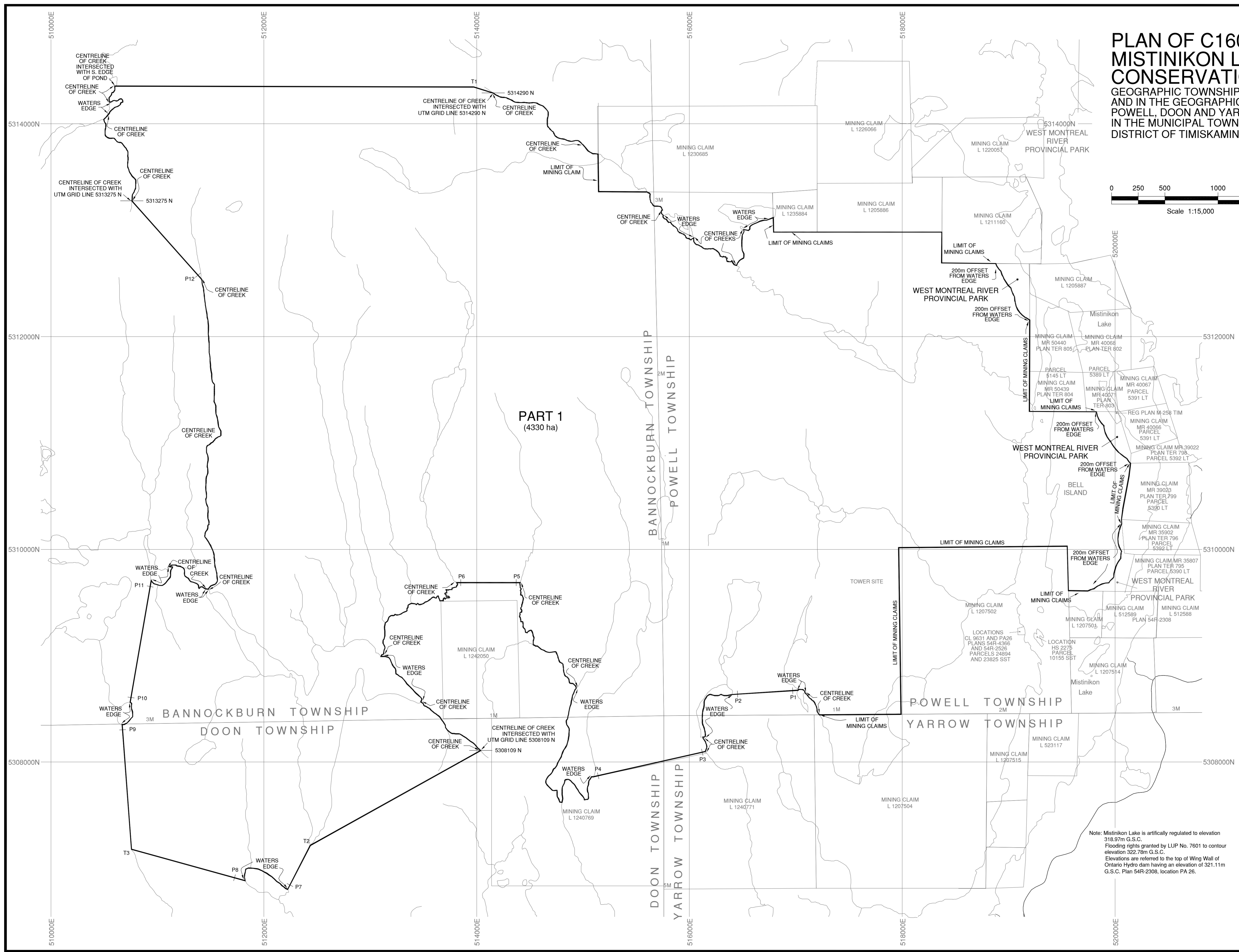
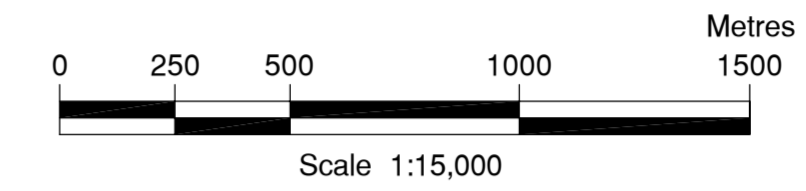


PLAN OF C1600 MISTINIKON LAKE UPLANDS CONSERVATION RESERVE

GEOGRAPHIC TOWNSHIP OF BANNOCKBURN
AND IN THE GEOGRAPHIC TOWNSHIP OF
POWELL, DOON AND YARROW
IN THE MUNICIPAL TOWNSHIP OF MATACHEWAN
DISTRICT OF TIMISKAMING



PART 1
(4330 ha)

UTM COORDINATES OF INTERSECTION POINTS.				UTM COORDINATES OF POINTS ON THE BOUNDARY				
#	Easting	Northing	#	Easting	Northing	#	Easting	Northing
T1	513973	5314346	P1	516970	5308672			
T2	512436	5307217	P2	516451	5308639			
T3	510756	5307180	P3	516121	5308993			
			P4	515142	5307872			
			P5	514372	5309888			
			P6	513852	5309688			
			P7	512246	5306845			
			P8	511724	5306914			
			P9	510673	5308303			
			P10	510752	5308607			
			P11	510932	5309650			
			P12	511381	5312577			

- NOTES:**
- CAUTION: THIS IS NOT A PLAN OF SURVEY.
- All coordinates are related to NAD83 CSRS(98)UTM Zone 17.
 - Points labelled "P" are to be used for the purpose of producing a boundary segment to an intersection.
 - Survey instructions from the Surveyor General must be obtained prior to establishing any of the boundaries on the ground.
 - All directions and distances shown hereon are grid.
 - LT - Denotes Leasehold Timiskaming.
 - TIM - Denotes Timiskaming.
 - SST - Denotes South Section Timiskaming.

AREA:	Part 1	4330	ha
	Total	4330	ha

ONTARIO REGULATION No. _____
SCHEDULE No. _____

CERTIFICATE OF SURVEYOR GENERAL

I HEREBY CERTIFY THAT THIS PLAN HAS BEEN FILED WITH THE OFFICE OF THE SURVEYOR GENERAL OF ONTARIO IN THE MINISTRY OF NATURAL RESOURCES ON THE _____ DAY OF _____ 2001.

B. MALONEY
SURVEYOR GENERAL



DATE COMPLETED: ..August...2001.....

This plan was compiled from data sets supplied by the Natural Resources and Values Information System (NRVIS), and other information of record in the Ministry of Natural Resources.

Produced by: Office of the Surveyor General

Note: Mistinikon Lake is artificially regulated to elevation 318.97m G.S.C.
Flooding rights granted by LUP No. 7601 to contour elevation 322.78m G.S.C.
Elevations are referred to the top of Wing Wall of Ontario Hydro dam having an elevation of 321.11m G.S.C. Plan 54R-2308, location PA 26.