

**O R D E R**

**SECTION 35, THE MINING ACT, R.S.O., 1990**

**ORDER NO. O-LL-C1602a/09 ONT**

**The MINING AND SURFACE RIGHTS** of the lands and lands under water highlighted on the attached sketch and withdrawn by Orders **W-LL-C1602a/06 ONT** and **W-LL-C1602b/08 ONT** are **RE-OPENED** to prospecting, staking out, sale or lease in accordance with the terms of this Order.

These lands and lands under water were withdrawn as proposed provincial parks or conservation reserves in the document entitled Proposed Land Use Strategy, Ontario's Living Legacy and is being re-opened in order to **immediately issue a new withdrawal** to modify the boundaries in preparation to be regulated.

This Order comes into effect on Saturday, May 30 at 12:01:00 a.m.

Date: May 29, 2009

**ORIGINAL SIGNED BY "CHRISTINE KASZYCKI"**

Christine Kaszycki  
Assistant Deputy Minister  
Mines and Minerals Division  
Sudbury, Ontario

Copies:

Senior Manager, Mining Lands, 3rd Floor, Sudbury, MNDM  
Mining Recorder, Sudbury, Ontario, MNDM (2)  
Parks Ontario, Peterborough, Ontario, MNR  
MNR File (Peterborough): 195150

# C1602a: Whitefish and East Whitefish Lakes Sandy Till Upland Conservation Reserve

Reopening Order O-LL-C1602a/09 ONT

Scale: 1:50,000

**Other Land Use Designations and Features**

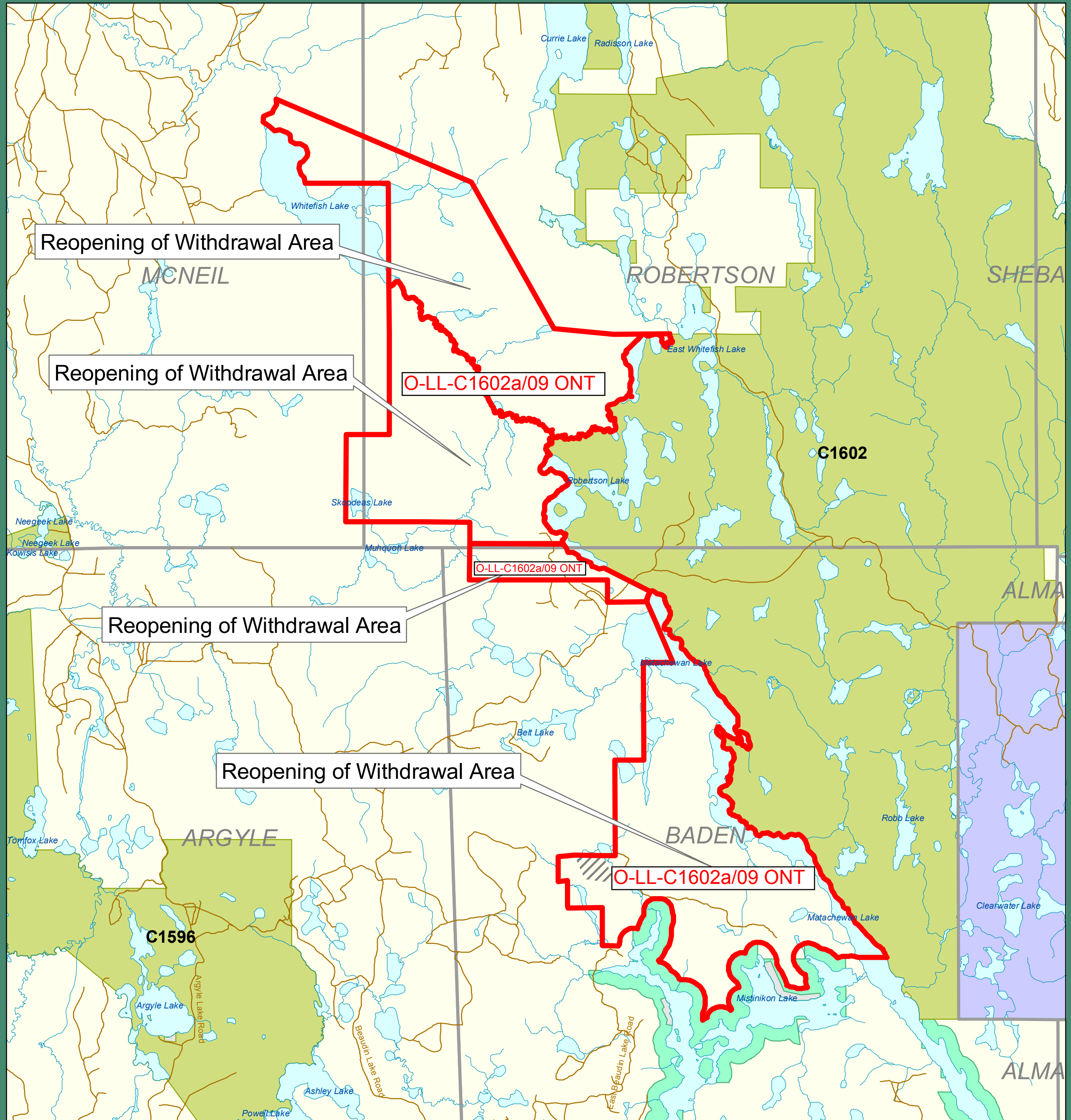
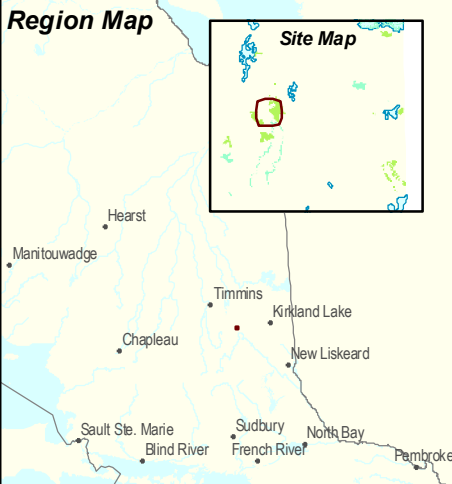
- Road
- Railroad
- Utility Line
- Lake \ River
- Geographic Township
- Private \ Patent Land
- Indian Reserve
- Existing National Park

**Land Use Amendment Type**

- Addition
- Amalgamation
- O-LL-C1602a/09 ONT
- New
- Existing Amendment Site

**Crown Land Use Designations**

- General Use Area
- Existing Provincial Park
- Recommended Provincial Park
- Existing Conservation Reserve
- Recommended Conservation Reserve
- Enhanced Management Area
- Forest Reserve
- Wilderness Area
- Overlay Designation



The information provided in this Crown Land Use Policy Atlas map is intended to be used only as a general guide for locating and viewing Crown land use areas and associated Crown land use policies. The maps are illustrative only. Users should not rely on any of this information in any instance as authoritative or as an accurate or precise indicator of privately-owned land, a travel route or location of features, or as a guide for navigation. Also, reference to the Crown Land Use Policy Atlas maps does not replace the need for users to check existing laws and regulation to confirm the seasons when activities such as hunting and fishing are permitted or to obtain specific approvals, permits or licences required to carry out certain activities on Crown land. The Crown Land Use Policy Atlas and its associated products are made available by the Ministry of Natural Resources (MNR) as a public service on an "as-is", "as-available" basis without representations or warranties of any kind, express or implied. The information provided in the map is subject to change without notice. MNR has no duty to make any revision, update, or modification to the map, or to provide notice of such change. Users should verify the accuracy, currency and applicability of any of the information provided in the map from an authoritative source such as a Government planner in the applicable MNR District and/or Ontario Parks Zone Office and physical indicators on the ground such as signage before acting on the information provided in the maps. Such Government staff should also be contacted for assistance with land use policy interpretation and additional information.