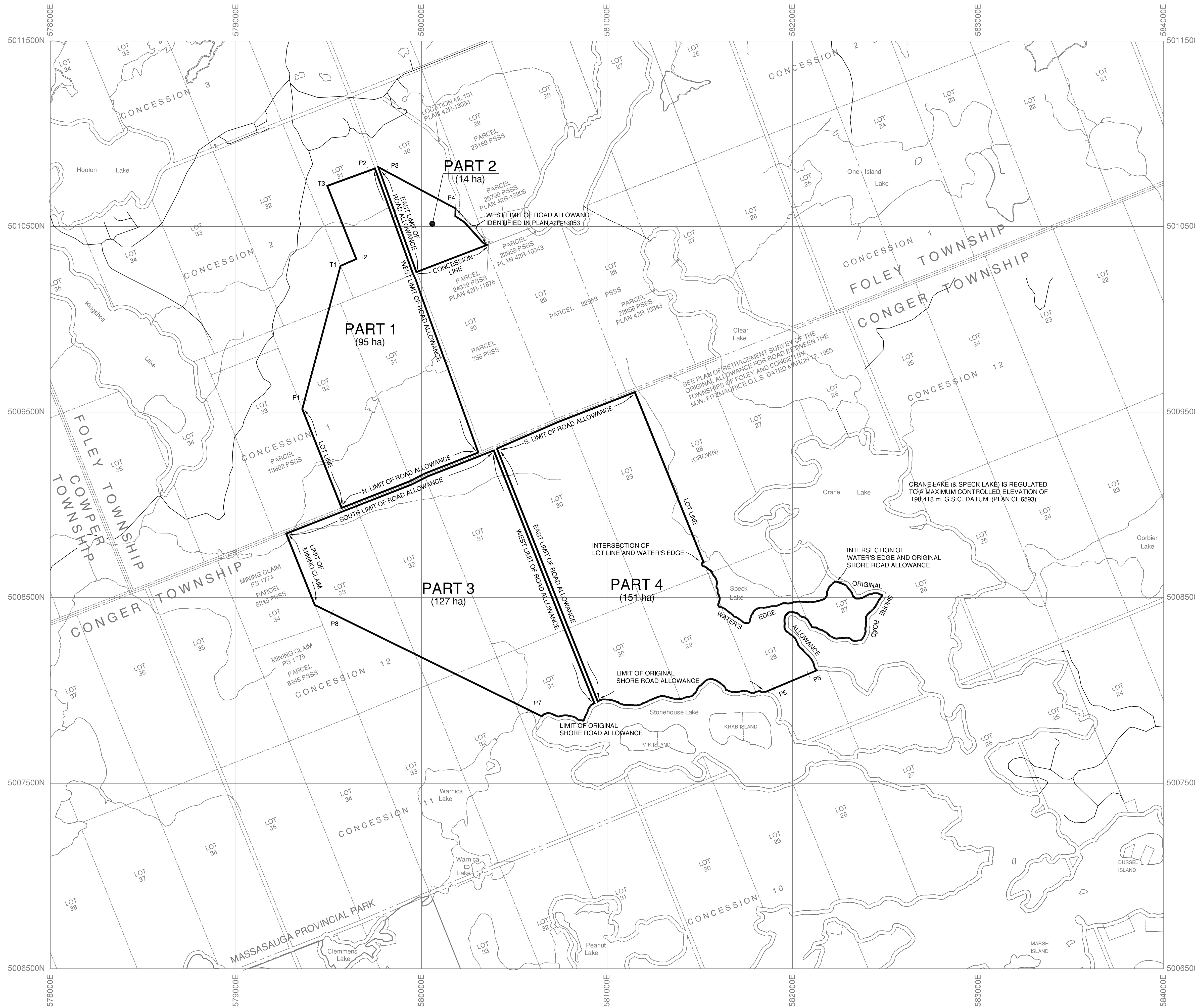
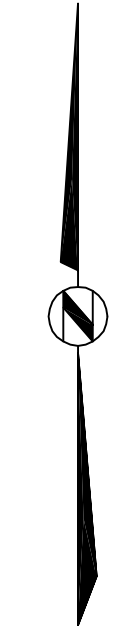
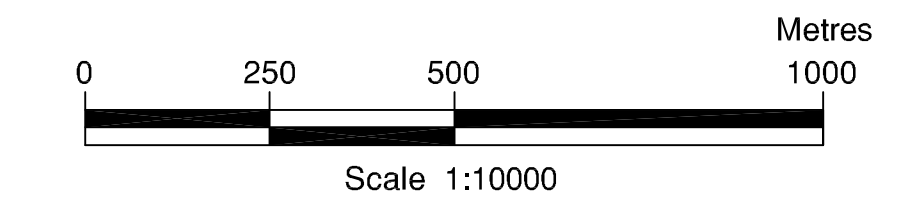


**W-LL-C 27/03 ONT**  
**PLAN OF C27**  
**CRANE LAKE FOREST**  
**CONSERVATION RESERVE**  
 GEOGRAPHIC TOWNSHIP OF CONGER NOW IN THE  
 MUNICIPALITY OF THE TOWNSHIP OF THE ARCHIPELAGO  
 AND THE TOWNSHIP OF FOLEY NOW IN THE  
 MUNICIPALITY OF THE TOWNSHIP OF SEGUIN  
 DISTRICT OF PARRY SOUND



UTM COORDINATES OF INTERSECTION POINTS.			UTM COORDINATES OF POINTS ON THE BOUNDARY		
#	Easting	Northing	#	Easting	Northing
T1	579564	5010288	P1	579371	5009565
T2	579649	5010326	P2	579716	5010801
T3	579493	5010719	P3	579812	5010797
			P4	580151	5010615
			P5	582085	5008089
			P6	581899	5008011
			P7	580575	5007897
			P8	579518	5008415

- NOTES:**
- CAUTION: THIS IS NOT A PLAN OF SURVEY.
- All coordinates are related to NAD83 CSRS(98)UTM Zone 17.
  - Points labelled "P" are to be used for the purpose of producing a boundary segment to an intersection.
  - Survey instructions from the Surveyor General must be obtained prior to establishing any of the boundaries on the ground.
  - All directions and distances shown hereon are grid.
  - WE - Denotes Water's Edge.
  - PSSS - Denotes Parry Sound South Section.

AREA :	Part 1	95 (ha)	Part 3	127 (ha)
	Part 2	14 (ha)	Part 4	151 (ha)
	Total 387 (ha)			

ONTARIO REGULATION No. \_\_\_\_\_  
 SCHEDULE No. \_\_\_\_\_

**CERTIFICATE OF SURVEYOR GENERAL**

I HEREBY CERTIFY THAT THIS PLAN HAS BEEN FILED WITH THE OFFICE OF THE SURVEYOR GENERAL OF ONTARIO IN THE MINISTRY OF NATURAL RESOURCES ON THE \_\_\_\_\_ DAY OF \_\_\_\_\_ 2003.

B. MALONEY  
SURVEYOR GENERAL



DATE COMPLETED: ..October...2002.....

This plan was compiled from data sets supplied by the Natural Resources and Values Information System (NRVIS), and other information of record in the Ministry of Natural Resources and Northern Development and Mines.

Produced by: Office of the Surveyor General