

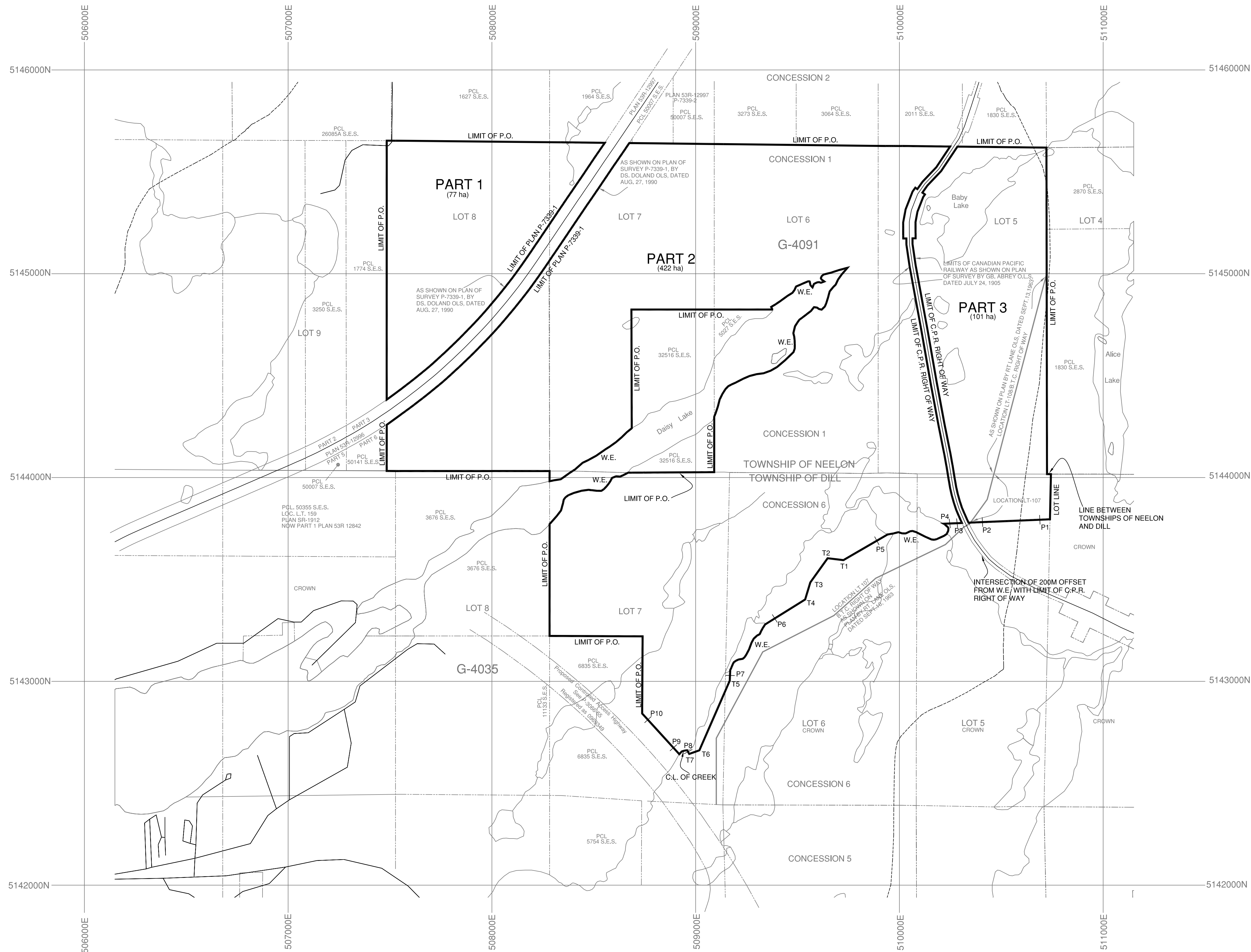
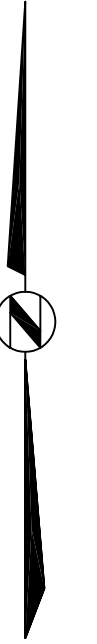
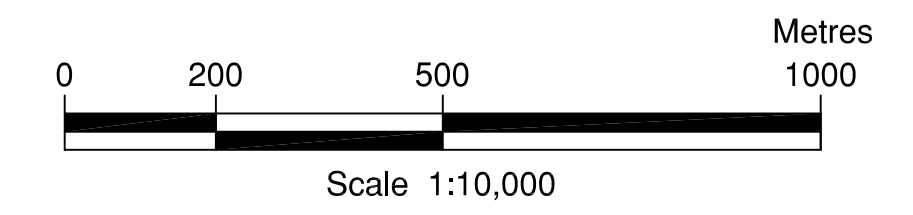
**DRAFT**

Withdrawal Order  
W-LL-C172/05 ONT

PLAN OF P172  
DAISY LAKE UPLANDS  
PROVINCIAL PARK  
(NATURE RESERVE CLASS)

GEOGRAPHIC TOWNSHIPS OF DILL AND NEELON  
CITY OF GREATER SUDBURY  
DISTRICT OF SUDBURY

SHEET 1 OF 1



UTM COORDINATES OF POINTS ON THE BOUNDARY			UTM COORDINATES OF POINTS ON THE BOUNDARY		
#	Easting	Northing	#	Easting	Northing
T1	509726	5143595	P1	510689	5143793
T2	509648	5143604	P2	510407	5143781
T3	509563	5143485	P3	510283	5143776
T4	509538	5143402	P4	510247	5143775
T5	509168	5143004	P5	509889	5143690
T6	509019	5142662	P6	509388	5143309
T7	508969	5142644	P7	509169	5143029
			P8	508962	5142655
			P9	508891	5142674
			P10	508765	5142812

- NOTES:**
- CAUTION: THIS IS NOT A PLAN OF SURVEY.
- All coordinates are related to NAD83 CSRS(98)UTM Zone 17.
  - Points labelled "P" are to be used for the purpose of producing a boundary segment to an intersection.
  - Survey instructions from the Surveyor General must be obtained prior to establishing any of the boundaries on the ground.
  - W.E. - Denotes Water's Edge.
  - B.T.C. - Denotes Bell Telephone Company.
  - P.O. - Denotes Private Ownership.
  - C.L. - Denotes Centre Line.
  - S.E.S. - Denotes Sudbury East Section.



AREA :	Part 1	77 (ha)
	Part 2	422 (ha)
	Part 3	101 (ha)
	Total	600 (ha)

ONTARIO REGULATION No. \_\_\_\_\_  
SCHEDULE No. \_\_\_\_\_

**CERTIFICATE OF SURVEYOR GENERAL**

I HEREBY CERTIFY THAT THIS PLAN HAS BEEN FILED WITH THE OFFICE OF THE SURVEYOR GENERAL OF ONTARIO IN THE MINISTRY OF NATURAL RESOURCES ON THE \_\_\_\_\_ DAY OF \_\_\_\_\_ 2004.

B. MALONEY  
SURVEYOR GENERAL

DATE COMPLETED: ...November.....2004.....

This plan was compiled from data sets supplied by the Natural Resources and Values Information System (NRVIS), and other information of record in the Ministry of Natural Resources and Northern Development and Mines.

Produced by: Office of the Surveyor General