

## ORDER

### SECTION 35, THE MINING ACT, R.S.O. 1990

#### ORDER NO. O-P-95/11

The SURFACE and MINING RIGHTS of the area outlined in red on the attached sketch, in the Townships of Thorneloe (G-3229) & Price (M-0307, Porcupine Mining Division, containing 512 hectares, more or less, are hereby REOPENED to prospecting, staking out, sale or lease.

This area was originally withdrawn by Order W-P-165/11, while the Ministry determined the status of the land.

This order comes into effect upon signing.

Date: December 9, 2011

Time: 1:36 p.m

ORIGINAL SIGNED BY "LISETTE PRUDHOMME"

Lisette Prud'homme, A/Provincial Mining Recorder  
Mining Lands Section  
Mines and Minerals Division

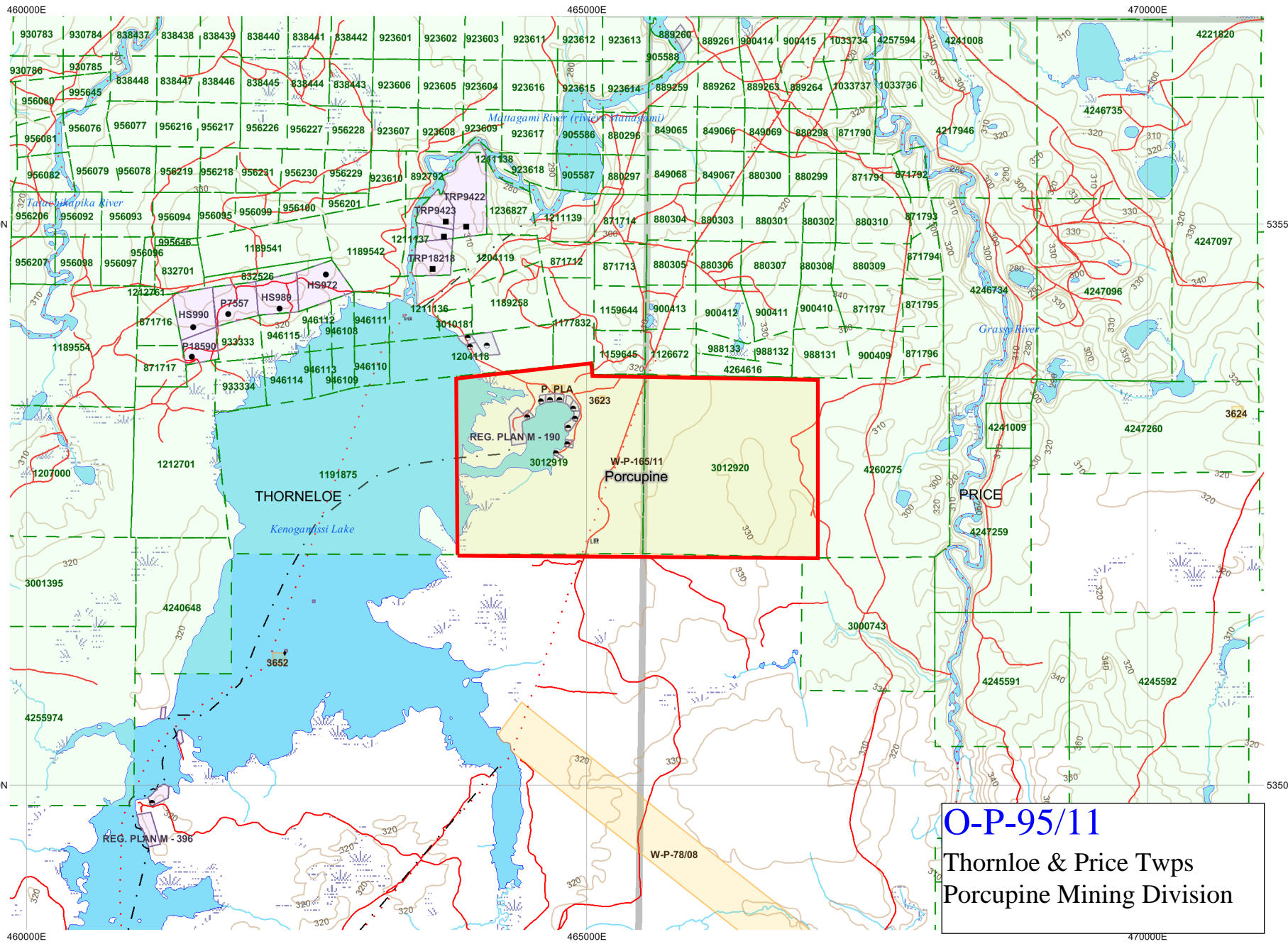
Copies:

Senior Manager, Mining Lands Section, MNDMF, Sudbury

Provincial Mining Recorder, MNDMF, Sudbury

Provincial Lands Specialist - CLR

MLC – Porcupine/Timmins



**O-P-95/11**  
Thornloe & Price Twps  
Porcupine Mining Division