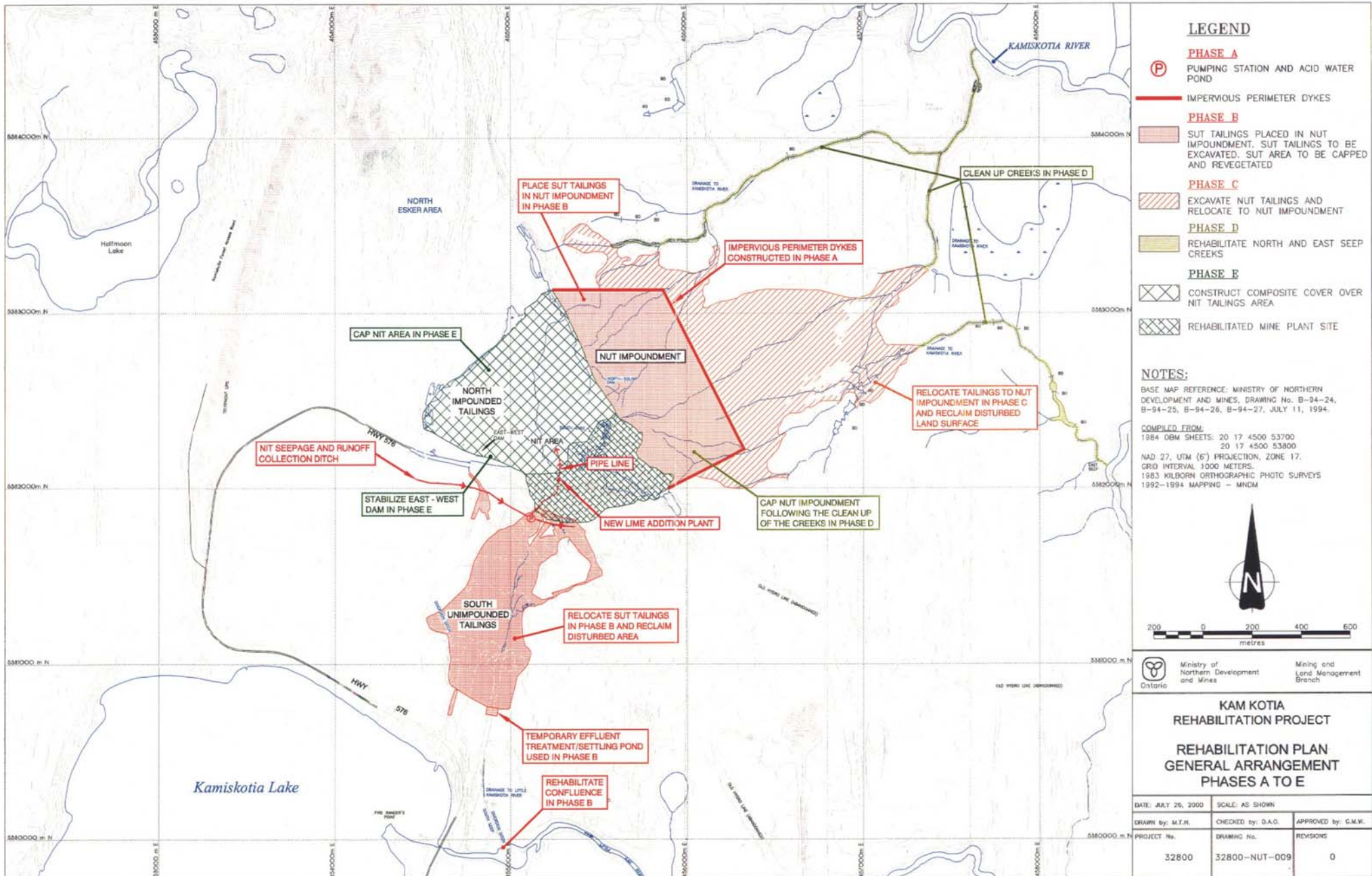


# Senes' Kam Kotia Rehabilitation Plan



## LEGEND

- PHASE A**  
 PUMPING STATION AND ACID WATER POND
- IMPERVIOUS PERIMETER DYKES
- PHASE B**  
 SUT TAILINGS PLACED IN NUT IMPOUNDMENT. SUT TAILINGS TO BE EXCAVATED. SUT AREA TO BE CAPPED AND REVEGETATED
- EXCAVATE NUT TAILINGS AND RELOCATE TO NUT IMPOUNDMENT
- PHASE C**  
 REHABILITATE NORTH AND EAST SEEP CREEKS
- PHASE D**  
 REHABILITATE NORTH AND EAST SEEP CREEKS
- PHASE E**  
 CONSTRUCT COMPOSITE COVER OVER NIT TAILINGS AREA
- REHABILITATED MINE PLANT SITE

## NOTES:

BASE MAP REFERENCE: MINISTRY OF NORTHERN DEVELOPMENT AND MINES, DRAWING No. B-94-24, B-94-25, B-94-26, B-94-27, JULY 11, 1994.  
 COMPILED FROM:  
 1984 OBM SHEETS: 20 17 4500 53700  
 20 17 4500 53800  
 NAD 27, UTM (6) PROJECTION, ZONE 17.  
 GRID INTERVAL 1000 METERS.  
 1983 KILBORN ORTHOGRAPHIC PHOTO SURVEYS  
 1992-1994 MAPPING - MNDM



Ministry of Northern Development and Mines  
 Mining and Land Management Branch

### KAM KOTIA REHABILITATION PROJECT REHABILITATION PLAN GENERAL ARRANGEMENT PHASES A TO E

DATE: JULY 26, 2000	SCALE: AS SHOWN
DRAWN by: M.T.H.	CHECKED by: D.A.O.
PROJECT No. 32800	APPROVED by: G.M.W.
DRAWING No. 32800-NUT-009	REVISIONS 0