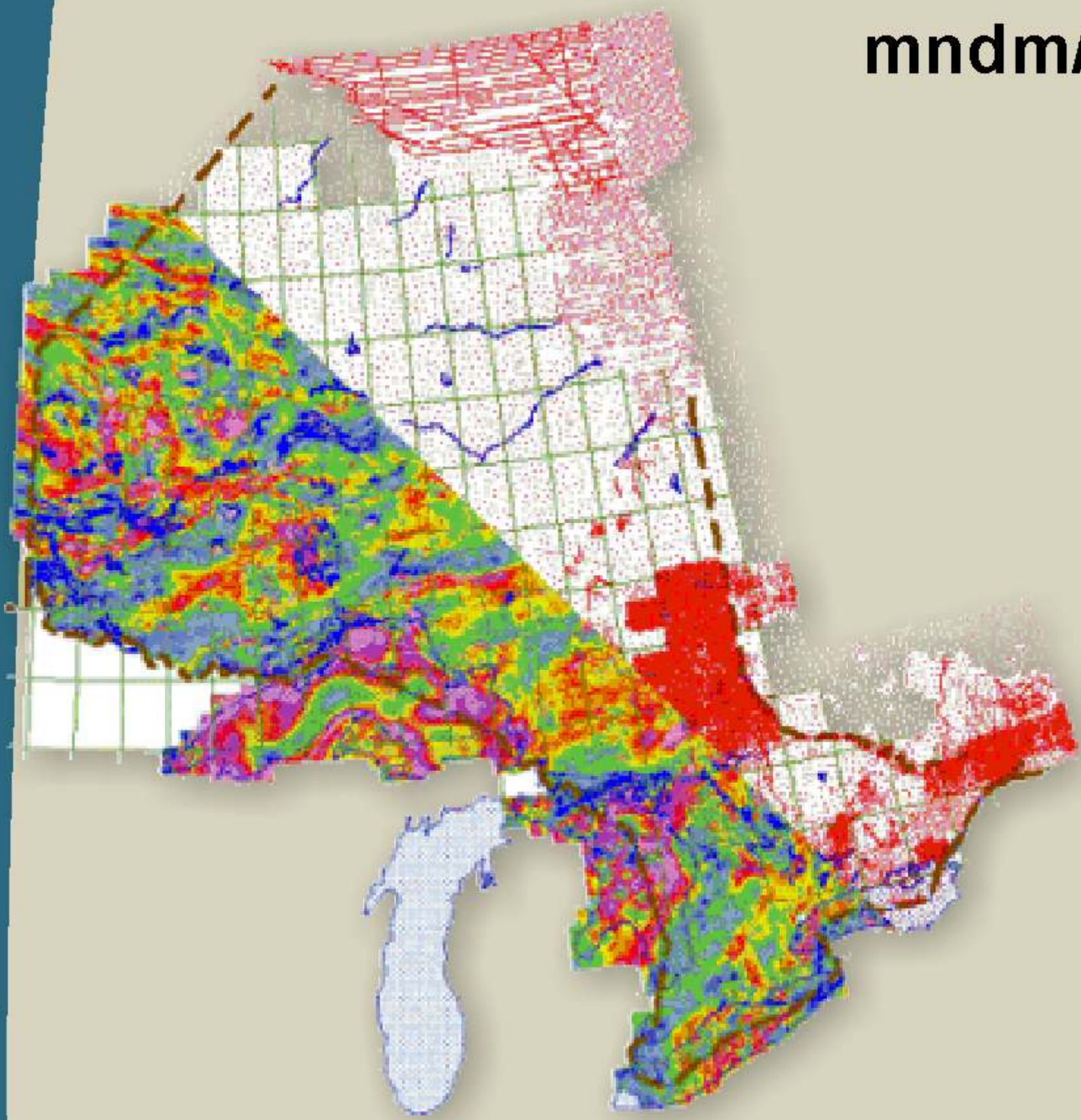


Ontario Geophysics Overview

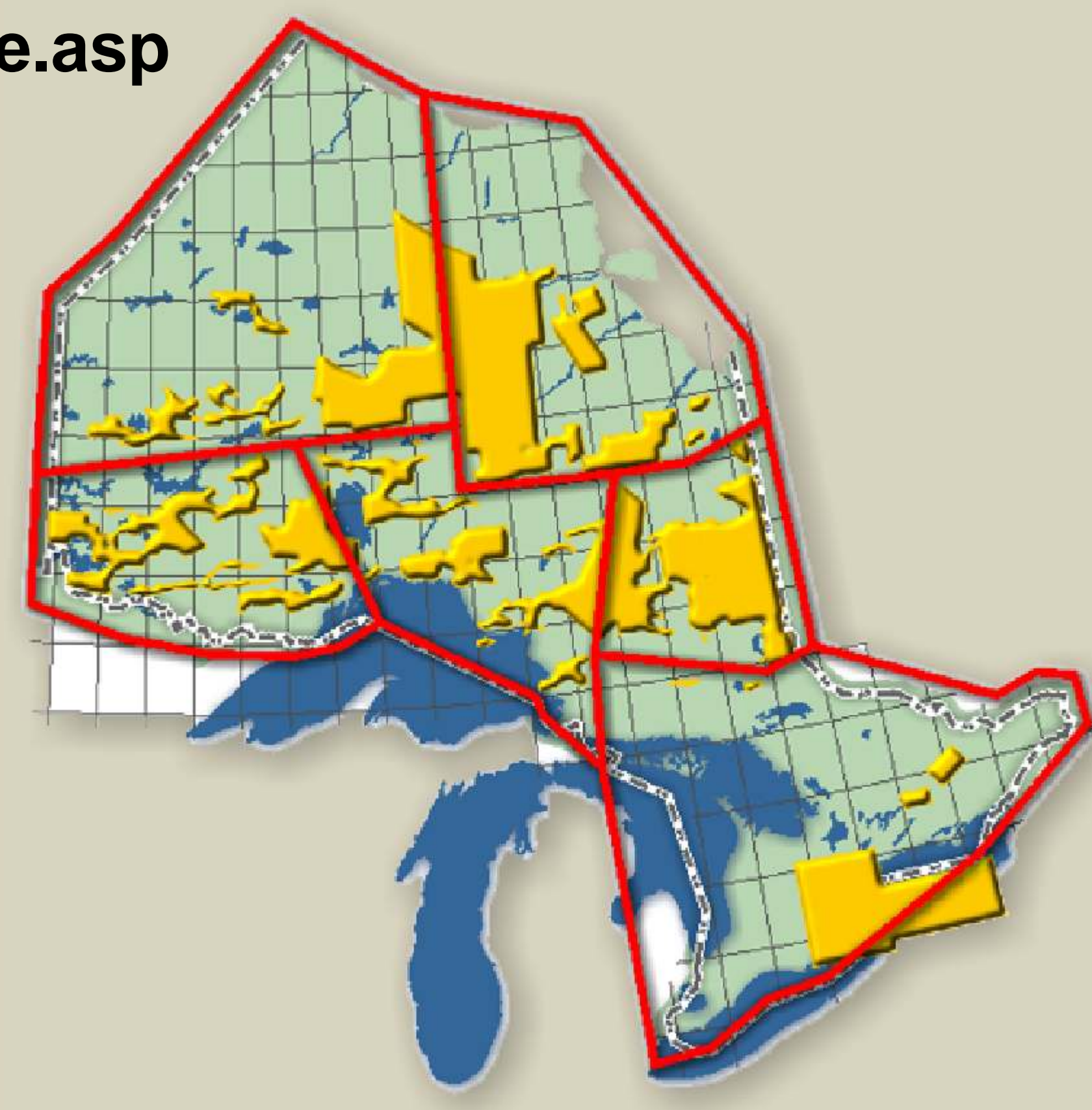
ONTARIO GEOLOGICAL SURVEY GEOPHYSICAL ATLAS WEBSITE:

Repository of available
geophysical data or data sources
for Ontario:

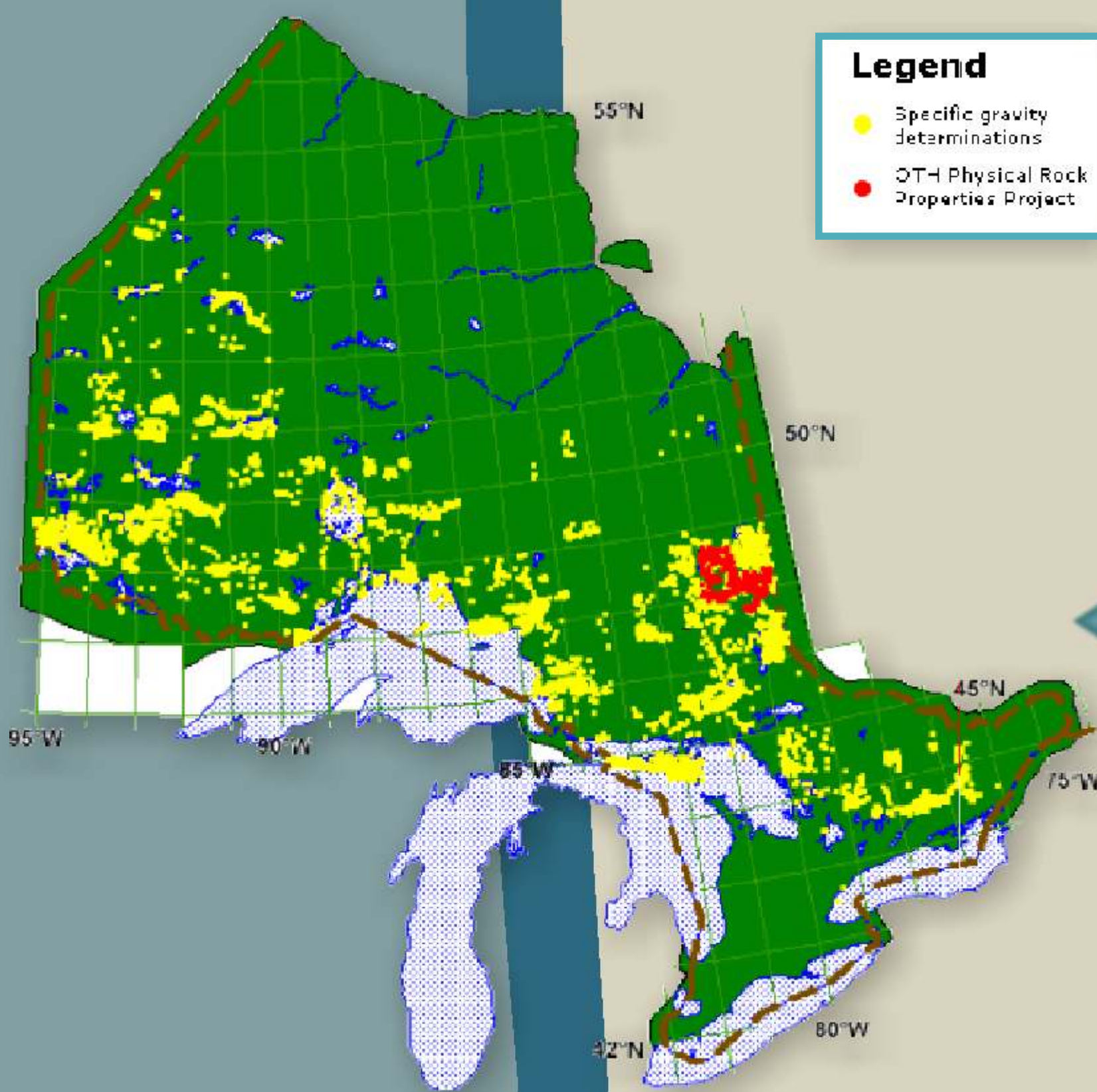
http://www.mndm.gov.on.ca/mndm/mines/ogs/gpxatlas/default_e.asp



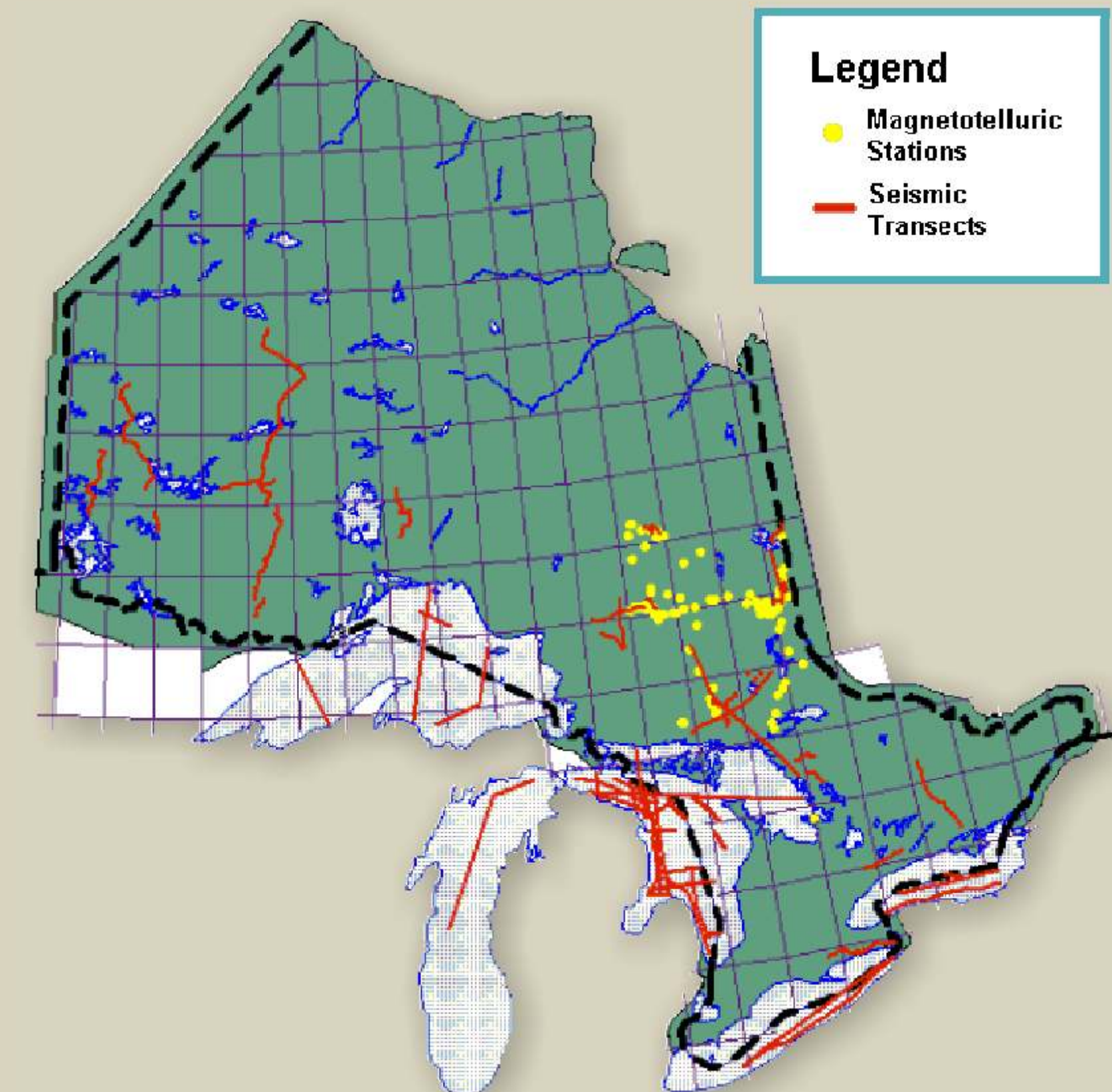
Site indicating provincial-scale magnetic and gravity data available from OGS



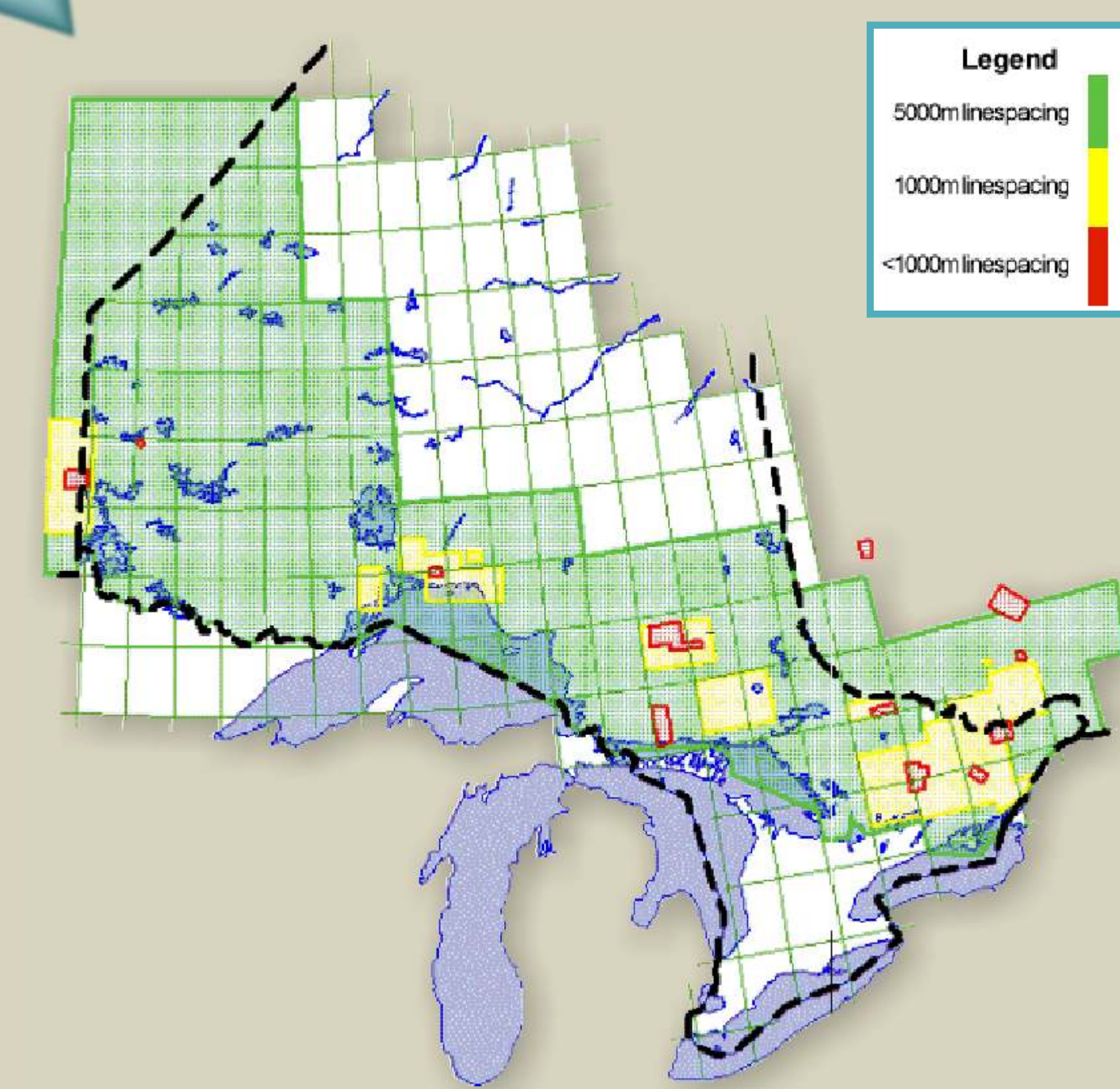
Site for narrowing the scope of selecting surveys in Ontario by choosing the region, then the specific survey



Site indicating rock property data available from OGS



Site indicating Ontario-based seismic transects and magnetotelluric data available elsewhere



Site indicating Ontario-based radiometric data available elsewhere

METADATA DOWNLOADS

Public Airborne Survey Information
Survey details in an Excel spreadsheet (48 KB)
Surveys in ArcView format (zipped; 1360 KB)

Seismic Transects

Transects in ArcView format (zipped; 89 KB)

Site providing a source of digital data for published geophysical surveys (airborne magnetic, electromagnetic, gravity, radiometric) and seismic transects

