
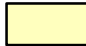


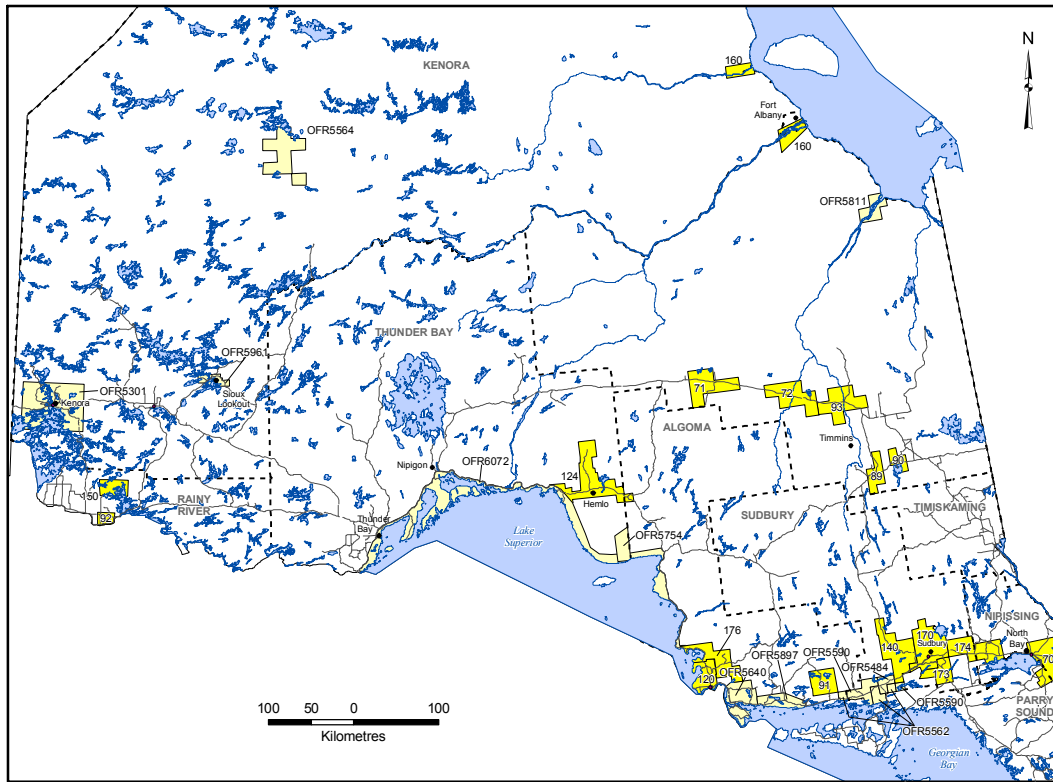


Mines and Minerals Division
Ontario Geological Survey

INDEX TO
AGGREGATE RESOURCES
INVENTORY PUBLICATIONS

October 2010
Southern Ontario

-  Published Aggregate Resources Inventory Paper (ARIP)
-  Published Open File Report (OFR)
-  Aggregate Resources Inventory Paper (ARIP) in progress
-  Townships



Published Aggregate Resources Inventory Paper (ARIP)

Published Open File Report (OFR)

Lakes

Rivers

Roads

Ontario
Mines and Minerals Division
Ontario Geological Survey

**INDEX TO
AGGREGATE RESOURCES
INVENTORY PUBLICATIONS**

October 2010
Northern Ontario

ARIP Township/County/Area

- 2 Adjala Township
- 4 Town of Pelham
- 8 Brantford Township
- 9 Blanshard Township
- 10 South Dumfries Township
- 15 Smith Township
- 17 Douro Township
- 18 Asphodel Township
- 20 Ennismore Township
- 24 Otonabee Township
- 33 Oakland Township
- 43 Burford Township
- 55 London Township
- 56 Flos Township
- 57 Biddulph Township
- 58 Lobo Township
- 59 City of Nanticoke
- 60 Vespra Township
- 61 Township of Zorra
- 62 Township of South-West Oxford
- 63 Township of E. Zorra - Tavistock
- 64 Town of Haldimand
- 65 Oro Township
- 66 Township of Norwich
- 67 Town of Dunnville
- 68 Township of Blandford-Blenheim
- 70 North Bay Area
- 71 Hearst Area
- 72 Kapuskasing Area
- 74 North Dorchester Township
- 75 Westminster Township
- 76 Delaware Township
- 77 West Nissouri Township
- 79 Tiny, Tay, and Medonte Townships
- 80 Orillia & Matchedash Townships
- 89 City of Timmins - Central Part
- 90 City of Timmins - Eastern Part
- 91 Town of Elliot Lake
- 92 Fort Frances Area
- 93 Smooth Rock Falls Area
- 96 Cavan, North & South Monaghan Townships
- 97 Township of Delhi
- 98 Town of New Tecumseth
- 104 Towns of Grimsby & Lincoln, Twp of West Lincoln
- 107 Townships of McGillivray, East & West Williams
- 110 Elma Township
- 111 Logan and Hibbert Townships
- 113 Townships of Essa & Tosorontio

ARIP Township/County/Area

- 114 Town of Innisfil & Bradford West Gwillimbury
- 115 Township of Wainfleet
- 117 City of Port Colborne and Town of Fort Erie
- 120 Sault Ste. Marie Area
- 122 Sunnidale Township
- 124 Hemlo Area
- 125 Mersea, Gosfield North and Gosfield South Twps.
- 126 Raleigh & Harwich Townships
- 132 Harvey Twp.
- 133 Belmont Twp.
- 140 West of Sudbury
- 141 Pt. of Haliburton County
- 142 Hope and Hamilton Townships
- 143 Haldimand and Alnwick Townships
- 144 St. Edmunds and Lindsay Townships
- 146 Parry Sound - French River Area
- 148 Burleigh, Anstruther, Chandosand, Methuen Twps
- 150 Fort Frances
- 151 Hindon and Anson
- 152 Galway and Cavendish
- 155 Ramara
- 156 The Bruce Mines to Blind River Area
- 158 E. Northumberland County
- 160 Ft. Albany-Kash.-Attawapiskat, Neon
- 161 R.M. Waterloo
- 162 Co. Wellington
- 163 Co. Dufferin
- 165 R.M. Peel update
- 167 United Counties of Stormont, Dundas and Glengarry
- 168 Victoria County
- 169 United Counties of Prescott & Russell
- 170 East half of Reg. Municipality of Sudbury
- 171 Lennox and Addington County
- 172 Prince Edward County
- 173 Dill, Cleland, Eden, Tilton, Secord
- 174 Hwy 17 corridor - Wahnapiatae-Sturgeon Falls
- 176 Echo Bay to Batchawana Bay Area
- 177 Huron County
- 179 R.M. of York
- 180 Grey County
- 181 City of Hamilton
- 182 District of Muskoka
- 183 United Counties of Leeds-Grenville
- 184 R.M. of Halton
- 185 R.M. of Durham
- 186 Hastings County

OPEN FILE REPORTS - Ontario Geological Survey

- OFR 5265 Silica sand potential in E. Ontario, Prel. Rpt I
- OFR 5301 Aggregate Inventory of the Kenora Area
- OFR 5305 Silica sand potential in E. Ontario, Prel. Rpt II
- OFR 5484 Sand and Gravel Resources of the Espanola Area
- OFR 5550 Aggregate Assessment for the County of Lanark
- OFR 5562 Aggregate Resources Inventory of Hallam, McKinnon, Mongowin and Foster Twps., Dist. of Sudbury, Shedden Twp., Dist. of Algoma
- OFR 5564 Sand and Gravel Resources of the Opapimiskan Lake Area, District of Kenora
- OFR 5579 Mineral Aggregate Resource Inventory for the County of Renfrew, Southern Ontario
- OFR 5581 Mineral Aggregate Resource Inventory of the County of Frontenac, Southern Ontario
- OFR 5590 Aggregate Resources Inventory of the Massey Area, District of Sudbury
- OFR 5640 Aggregate Resources Inventory of the Echo Bay - Bruce Mines Area and St. Joseph Island, District of Algoma
- OFR 5754 Aggregate Resources Inventory of the Mishibishu Lake Area
- OFR 5811 Aggregate Resources Inventory of the Moosonee Area
- OFR 5827 Delineation of Buried Aggregate Resources in the Pinehurst and Leamington Areas of Southwestern Ontario
- OFR 5897 Aggregate Resources Inventory of the Bruce Mines to Blind River Area
- OFR 5961 Aggregate Resources Inventory of the Sioux Lookout Area
- OFR 6072 Physical evaluation and assessment of bedrock aggregate resource potential, North of Lake Superior