

Gold Mineralization, Exploration and Mining in Ontario

The Incas referred to gold as "The Tears of the Sun." According to Gerald M. Loed, "*The desire for gold is the most universal and deeply rooted commercial instinct of the human race.*"

Ontario has it. From its first discovery in 1866 in the Madoc area, through to the present day Ontario has been a major producer of gold. Anyone who has studied world-famous gold deposits has read about the Porcupine, Kirkland Lake, Red Lake and Hemlo mining camps.

Ontario's production in 2009 totalled 1 671 838 ounces (52 tonnes) of the yellow metal, from 10 mines. This accounted for more than 50% of the Canadian production and about 2% of world production. The value of gold produced in 2009 in Ontario accounted for over 48% of the total value of metal production in the province for the year.

Modern exploration in established gold camps across the province has resulted in new discoveries. New deposits have been reported in Red Lake, Timmins, Kirkland Lake, Matachewan, Madoc, Beardmore-Geraldton and Pickle Lake .

Recent exploration highlights are summarized in the various reports for the Resident Geologist Districts in the province. They are available on-line at:

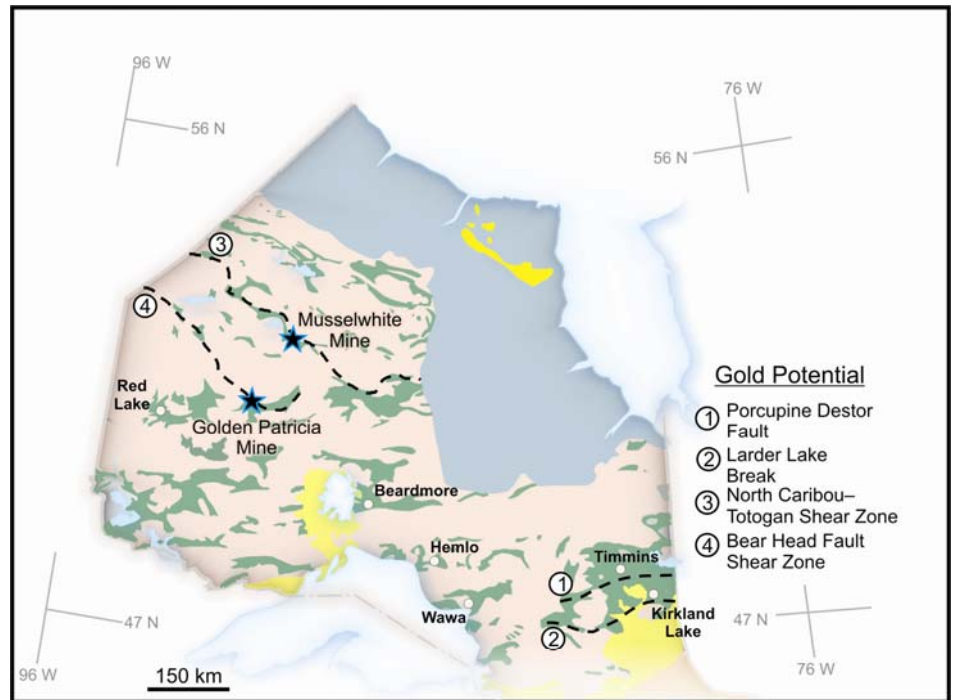
http://www.mndm.gov.on.ca/mines/ogs/resgeol/default_e.asp

With the steady rise in the price of gold from a low of \$US 868 per ounce in April to a high of \$US 1215 per ounce in December, there was strong interest in yellow metal prospects across the province.

Areas of potential in northern Ontario are shown on the map to the right.

Additional targets are found in the Central Metasedimentary Belt of Grenville Province in southern Ontario.

The locations of the province's active gold mines, and some of the Ontario's past producing mines are shown on the the reverse.



Archean

- Granitic rocks
- Metavolcanic and metasedimentary rocks

Proterozoic

- Southern Province
- Grenville Province

Phanerozoic

- Paleozoic and Mesozoic basin sequences



Ontario Gold

Areas of Significant Present and Past Production

- 1 Matheson-Harker-Holloway
- 2 Timmins
- 3 Hemlo
- 4 Musselwhite
- 5 Red Lake
- 6 Mishibishu Greenstone Belt
- 7 Kirkland Lake-Larder Lake
- 8 Detour Lake
- 9 Matachewan
- 10 Beardmore-Geraldton
- 11 Pickle Lake
- 12 Sachigo River
- 13 Berens River
- 14 Birch Lake - Uchi Lake
- 15 Southeastern Ontario

