

Gold Mineralization, Exploration and Mining in Ontario

The Incas referred to gold as "The Tears of the Sun." According to Gerald M. Loed, "*The desire for gold is the most universal and deeply rooted commercial instinct of the human race.*"

Ontario has it. From its first discovery in 1866 in the Madoc area through to the present day, the province has been a major producer of gold. Anyone who has studied world-famous gold deposits has learned about the Porcupine, Kirkland Lake, Red Lake and Hemlo mining camps.

Ontario's production in 2010 totalled 1 613 882 ounces (50.2 tonnes) of the yellow metal, from 13 mines. This accounted for approximately 56% of the Canadian production and is valued at approximately \$C2028 million.

Ontario's newest gold mine is Lake Shore Gold Corp.'s Timmins Mine. The company declared commercial production at the mine on January 1, 2011. This makes Timmins home to the newest and the oldest operating gold mines in Ontario, since the Dome Mine has been in continuous operation since 1910.

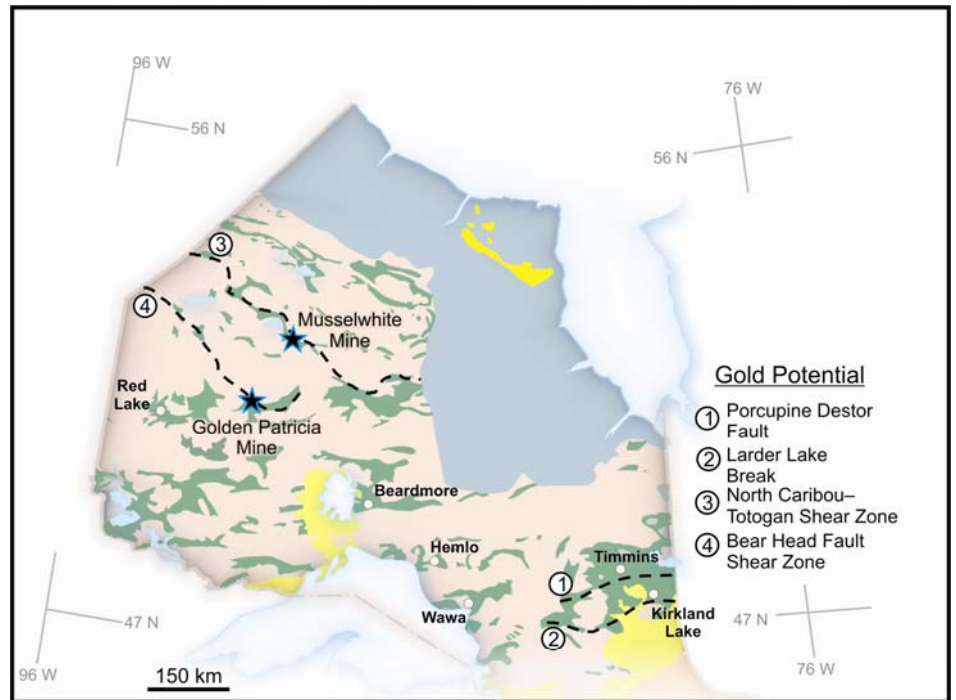
To learn more about on-going gold exploration and mining across the province, you can view various reports for the Resident Geologist Districts in Ontario. They are available on-line at:

http://www.mndmf.gov.on.ca/mines/ogs/resgeol/reports/default_e.asp

With the steady rise in the price of gold from a low of \$US1078 per ounce in late January 2010 to a high of \$US1437 per ounce in early March 2011, there has been an upsurge of interest in old and new gold properties in Ontario.

There are some 5800 recorded gold targets in the province. They range from discretionary occurrences to past producing mines.

The locations of the province's active gold mines and some of its past producing mines are shown on the back of this sheet.



Archean

- Granitic rocks
- Metavolcanic and metasedimentary rocks

Proterozoic

- Southern Province
- Grenville Province

Phanerozoic

- Paleozoic and Mesozoic basin sequences

Ontario Gold

Areas of Significant Present and Past Production

- 1 Matheson-Harker-Holloway
- 2 Timmins
- 3 Hemlo
- 4 Musselwhite
- 5 Red Lake
- 6 Mishibishu Lake
- 7 Goudreau-Lochalsh
- 8 Kirkland Lake-Larder Lake
- 9 Detour Lake
- 10 Matachewan
- 11 Beardmore-Geraldton
- 12 Pickle Lake
- 13 Sachigo River
- 14 Berens River
- 15 Birch Lake - Uchi Lake
- 16 Southeastern Ontario

